



Applications

Wall mounted electronic tap that is ideal for use in most domestic and commercial applications.

Water Saving

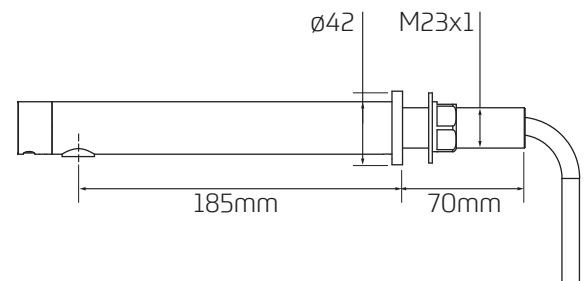
Delivers as little as 1 litre of water per visit. Supports BREEAM.

Features

- ~ Minimalistic styling
- ~ Available in polished chrome, stainless steel and matt black (RAL 9005) finishes
- ~ Hygienic touch-free operation
- ~ Delivers cold or premixed warm water
- ~ Shuts off when hand is removed from in front of sensor, water delivery is adjustable
- ~ Robust one piece brass body and vandal-resistant design
- ~ 1/2" BSP connection
- ~ Must be installed with a thermostatic mixing valve for premixed water
- ~ Suitable for pressures of 0.5- 8.0 bar. 8.0 bar + with a flow restrictor
- ~ 50mm-300mm sensor range*
- ~ Fail safe feature automatically closes the solenoid when power is cut or power is very low
- ~ Maximum temperature 70°C.



Dimensional Data



Technical Data

Operating Voltage	6 x 1.5V AA externally mounted batteries or mains/transformer powered
Mains Supply	230V AC 50Hz
Battery Supply	6 x 1.5V AA externally mounted batteries
Sensor Range	50mm - 300mm
Max Water Temperature	70°C
Flow Rate	6L Per Minute Standard (1.9 - 3.5L available)
Water Pressure	0.5 - 8.0 Bar
Connection	15mm Compression
Product Code	324329, 324328, 327968, 327969