

T H O M A S
D U D L E Y



Resan®
Sanitaryware
Applications

Resan



The source of ***clever plumbing products and people***

Welcome to Dudley Resan® Sanitaryware

This brochure is your essential guide to discovering the perfect configuration of Resan® sanitaryware for your specific room type and individual needs. Whether you're designing secure facilities, high-traffic areas, or unique installations, you'll find Resan® to be a convenient single-source solution that combines functionality with style.

Tougher than stainless steel, styled like ceramic

Dudley Resan® represents the pinnacle of innovation in vandal-resistant anti-ligature sanitaryware, offering unmatched durability, the elegant appearance of ceramic, and proudly manufactured in the UK. Engineered to meet the challenges of diverse environments, Resan® sanitaryware is tougher than stainless steel and designed to seamlessly integrate with a range of WC Pans, Basins, Urinals and accessories. It has been successfully used within most market sectors from prisons and custodial establishments to education, mental health and retail.

What is Resan? - A unique blend of polyester resin and aluminium tri-hydrate that creates an incredibly reliable anti-vandal solution while also enhancing a durable long-lasting finish that does not use a gel coat layer, so the surface can be easily renewed on-site, unlike fibreglass composite alternatives, stainless steel or vitreous china ceramic sanitaryware.



Resan® Sanitaryware // WC Pans & Toilets // Custodial

Resan® Sanitaryware // WC Pans & Toilets // Custodial



CUSTODIAL CELL
RESAN® WC PAN - STANDARD HEIGHT

RESAN SANITARYWARE // WC PANS & TOILETS

Anti-Ligature and Damage Resistant Toilet Pan
Standard Height with Polished Resin for Gloss Effect

- Anti-Ligature & Damage resistant
- Non-Flammable – BS476 Pt 6 & 7 Class ‘0’ and Class ‘1’
- ISO EN 19712-3-2007 Rated 5 for durability, stain resistance and cigarette burns
- BS EN 997 6/4 Litre and 5/3 Flush Approval
- Supports requirements of WAT 01 BREEAM
- UKCA/CE Marked
- UK Ministry Of Justice Safer Cell Approved [Bolt to wall only]



CUSTODIAL CELL
RESAN RESAN® WC PAN - LESS ABLED

RESAN SANITARYWARE // WC PANS & TOILETS

Anti-Ligature and Damage Resistant Toilet Pan Less
Able with Polished Resin for Gloss Effect

- Anti-Ligature & Damage resistant
- Non-Flammable – BS476 Pt 6 & 7 Class ‘0’ and Class ‘1’
- ISO EN 19712-3-2007 Rated 5 for durability, stain resistance and cigarette burns
- BS EN 997 6/4 Litre and 5/3 Flush Approval
- Supports requirements of WAT 01 BREEAM
- UKCA/CE Marked

Resan Pan - Standard Height

Fitting	Finish	Seat	Infra-red Control	Piezo Control	Qty
			Code	Code	
Bolt To Floor	Polished Resin for Gloss Effect	Plain Seat Open Rim	334084	334084	1
		Blue Seat Open Rim	334085	334085	
		Grey Seat Open Rim	375048	375048	
		Plain Seat Open Rim	334077	334077	
Bolt To Wall	Polished Resin for Gloss Effect	Blue Seat Open Rim	334086	334086	1
		Grey Seat Open Rim	375047	375047	
Basin 2 tap hole	Polished Resin for Gloss Effect	-	374417	374417	1
4 Way Control	-	-	374572	374572	1
Sensor WC	-	-	374614	374595	1
Sensor Basin Red Control	-	-	374596	374593	1
Sensor Basin Blue Control	-	-	374613	384594	1
Solenoid valves	-	-	374578	374578	2
Cistern Interface	-	-	374580	374580	1
Miniflo Cistern	-	-	326510	326510	1
TMV 15mm	-	-	324551	324551	1
Remote key switch	-	-	374579	374579	1

Resan Pan - Less Able

Fitting	Finish	Seat	Infra-red Control	Piezo Control	Qty
			Code	Code	
Bolt to Floor	Polished Resin for Gloss Effect	Plain	372561	372561	1
		Plain Blue	372562	372562	
		Plain Grey	372563	372563	
		Plain	372558	372558	
Bolt to Wall	Polished Resin for Gloss Effect	Plain Blue	372559	372559	1
		Plain Grey	372560	372560	
Basin 2 tap hole	Polished Resin for Gloss Effect	-	374417	374417	1
4 Way Control	-	-	374572	374572	1
Sensor WC	-	-	374614	374595	1
Sensor Basin Red Control	-	-	374596	374593	1
Sensor Basin Blue Control	-	-	374613	384594	1
Solenoid valves	-	-	374578	374578	2
Cistern Interface	-	-	374580	374580	1
Miniflo Cistern	-	-	326510	326510	1
TMV 15mm	-	-	324551	324551	1
Remote key switch	-	-	374579	374579	1



Resan® Sanitaryware // WC Pans & Toilets // Care Home NHS



CARE HOME NHS / ENSUITE RESAN® WC PAN - STANDARD HEIGHT

RESAN SANITARYWARE // WC PANS & TOILETS

Anti-Ligature and Damage Resistant Toilet Pan
Standard Height with Polished Resin for Gloss Effect

- Anti-Ligature & Damage resistant
- Non-Flammable – BS476 Pt 6 & 7 Class ‘0’ and Class ‘1’
- ISO EN 19712-3-2007 Rated 5 for durability, stain resistance and cigarette burns
- BS EN 997 6/4 Litre and 5/3 Flush Approval
- Supports requirements of WAT 01 BREEAM
- UKCA/CE Marked
- UK Ministry Of Justice Safer Cell Approved [Bolt to wall only]

Resan® Sanitaryware // WC Pans & Toilets // Care Home NHS



CARE HOME NHS / ENSUITE RESAN® WC PAN - LESS ABLED

RESAN SANITARYWARE // WC PANS & TOILETS

Anti-Ligature and Damage Resistant Toilet Pan Less
Able with Polished Resin for Gloss Effect

- Anti-Ligature & Damage resistant
- Non-Flammable – BS476 Pt 6 & 7 Class ‘0’ and Class ‘1’
- ISO EN 19712-3-2007 Rated 5 for durability, stain resistance and cigarette burns
- BS EN 997 6/4 Litre and 5/3 Flush Approval
- Supports requirements of WAT 01 BREEAM

Resan Pan - Standard Height | Basin | Shower

Fitting	Finish	Seat	Infra-red Control	Piezo Control	Qty
			Code	Code	
Bolt To Floor	Polished Resin for Gloss Effect	Plain Seat Open Rim	334084	334084	1
		Blue Seat Open Rim	334085	334085	
		Grey Seat Open Rim	375048	375048	
Bolt To Wall	Polished Resin for Gloss Effect	Plain Seat Open Rim	334077	334077	1
		Blue Seat Open Rim	334086	334086	
		Grey Seat Open Rim	375047	375047	
Basin 2 tap hole	Polished Resin for Gloss Effect	-	374417	374417	1
Basin 1 tap hole		-	374418	374418	
4 Way Control Kit - includes controls, solenoids and cables, please see pages 14 & 15	-	-	374981	374980	1
Showerhead option wall mounted	-	-	330798	330798	1
Showerhead option ceiling mounted	-	-	326184	326184	
Miniflo Cistern	-	-	326510	326510	1
TMV 15mm	-	-	324551	324551	2
Remote key switch	-	-	374579	374579	1



Resan Pan - Less Able | Basin | Shower

Fitting	Finish	Seat	Infra-red Control	Piezo Control	Qty
			Code	Code	
Bolt to Floor	Polished Resin for Gloss Effect	Plain	372561	372561	1
Bolt to Floor	Polished Resin for Gloss Effect	Plain Blue	372562	372562	
Bolt to Floor	Polished Resin for Gloss Effect	Plain Grey	372563	372563	
Bolt to Wall	Polished Resin for Gloss Effect	Plain	372558	372558	1
Bolt to Wall	Polished Resin for Gloss Effect	Plain Blue	372559	372559	
Bolt to Wall	Polished Resin for Gloss Effect	Plain Grey	372560	372560	
Basin 2 tap hole	Polished Resin for Gloss Effect	-	374417	374417	1
Basin 1 tap hole		-	374418	374418	
4 Way Control Kit - includes controls, solenoids and cables, please see pages 14 & 15	-	-	374981	374980	1
Showerhead option wall mounted	-	-	330798	330798	1
Showerhead option ceiling mounted	-	-	326184	326184	
Miniflo Cistern	-	-	326510	326510	1
TMV 15mm	-	-	324551	324551	2
Remote key switch	-	-	374579	374579	1



Resan® Sanitaryware // WC Pans & Toilets // Accessible Toilet



RESAN® WC PAN -
ACCESSIBLE TOILET

RESAN SANITARYWARE // WC PANS & TOILETS

- Anti-Ligature & Damage resistant
- Non-Flammable – BS476 Pt 6 & 7 Class ‘0’ and Class ‘1’
- ISO EN 19712-3-2007 Rated 5 for durability, stain resistance and cigarette burns
- BS EN 997 6/4 Litre and 5/3 Flush Approval
- Supports requirements of WAT 01 BREEAM
- UKCA/CE Marked

Resan Pan - Raised Height | Basin | Ext Box

Fitting	Finish	Seat	Infra-red Control Code	Piezo Control Code	Qty
Bolt to Floor	Polished Resin for Gloss Effect	Plain	372561	372561	1
		Plain Blue	372562	372562	
		Plain Grey	372563	372563	
Bolt to Wall	Polished Resin for Gloss Effect	Plain	372558	372558	1
		Plain Blue	372559	372559	
		Plain Grey	372560	372560	
Basin 2 tap hole	Polished Resin for Gloss Effect	-	374417	374417	1
Basin 1 tap hole		-	374418	374418	
4 Way Control System	-	-	374572	374572	1
Sensor WC	-	-	374614	374595	1
Sensor Basin Red Control	-	-	374596 [Red]	374593 [Red]	1
Sensor Basin Blue Control	-	-	374613 [Blue]	384594 [Blue]	1
Solenoid valves	-	-	374578	374578	2
Cistern Interface	-	-	374580	374580	1
Extension Box Only	Polished Resin for Gloss Effect	-	372564	372564	1
Miniflo Cistern	-	-	326510	326510	1
TMV3 15mm	-	-	324551	324551	1



Resan® Sanitaryware // WC Pans & Toilets // Accessible Ensuite



RESAN® WC PAN -
ACCESSIBLE ENSUITE

RESAN SANITARYWARE // WC PANS & TOILETS

- Anti-Ligature & Damage resistant
- Non-Flammable – BS476 Pt 6 & 7 Class ‘0’ and Class ‘1’
- ISO EN 19712-3-2007 Rated 5 for durability, stain resistance and cigarette burns
- BS EN 997 6/4 Litre and 5/3 Flush Approval
- Supports requirements of WAT 01 BREEAM
- UKCA/CE Marked

Resan Pan - Raised Height | Basin | Shower | Ext Box

Fitting	Finish	Seat	Infra-red Control Code	Piezo Control Code	Qty
Bolt to Floor	Polished Resin for Gloss Effect	Plain	372561	372561	1
		Plain Blue	372562	372562	
		Plain Grey	372563	372563	
Bolt to Wall	Polished Resin for Gloss Effect	Plain	372558	372558	1
		Plain Blue	372559	372559	
		Plain Grey	372560	372560	
Basin 2 tap hole	Polished Resin for Gloss Effect	-	374417	374417	1
Basin 1 tap hole		-	374418	374418	
4 Way Control Kit - includes controls, solenoids and cables, please see pages 14 & 15	-	-	374981	374980	1
Showerhead option wall mounted	-	-	330798	330798	1
Showerhead option ceiling mounted	-	-	326184	326184	
Extension Box Only	Polished Resin for Gloss Effect	-	372564	372564	1
TMV3 15mm	-	-	324551	324551	2
Miniflo Cistern	-	-	326510	326510	1
Remote key switch	-	-	374579	374579	1



Case Study

Ashby Facilities - Mental Health Housing

“ Our main aim was to provide a safe environment for the residents, so the anti-ligature features were essential. We also wanted the bathrooms to suit the style of the bungalows and many of the alternatives we looked at were dated and not suitable. When we saw the Resan® products from Thomas Dudley we knew we had the right products to meet our requirements. We are very satisfied with the products recommended; so much so that we are already looking at working with them again on other projects as they always deliver top quality products that are not only good to look at and use but more importantly are fit for purpose ”

Jamie Cooper, Operations Director, Ashby Facilities



The Challenge

Ashby Facilities approached Thomas Dudley in order to help provide them with a washroom solution for a newbuild development consisting of eight bungalows. The brief we received detailed the extensive requirements which was for a number of high quality, damage resistant anti-ligature sanitaryware products that were to be installed for their resident's safety. It was imperative that the solution we suggested was aesthetically pleasing and not look overly 'clinical'.

The Solution

Our suggested solution was the installation of a number of products from our Dudley Resan® range. These products are tested and manufactured to the highest standards and offer a perfect alternative to stainless steel. Resan® products are uniquely engineered from an advanced polymer resin material which is shatterproof, exceptionally hard wearing and chemical resistant, making it the perfect solution for mental health institutes.

The Thomas Dudley team looked at the entire range and presented all suitable options. The Resan® standard height pan with blue rim was chosen along with the Resan® infra-red basin, Resan® shelf and matching Resan® mirror to complete the look.

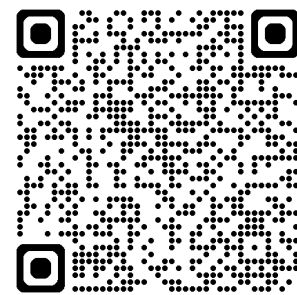
The Result

Ashby Facilities achieved their goal and have created modern aesthetically pleasing washroom facilities in the eight bungalows and are currently looking at working with Resan products on their next project.

Healthcare environments often demand a normal in appearance sanitaryware solution that is also extremely robust to wide-ranging challenges of misuse; Resan products provided anti-ligature and damage resistant fixtures and fittings that enhanced the safety, security and aesthetics for Ashby Facilities.



Visit our website
to read more



Case Study

Serco - HMP Doncaster

“ We have developed a trusted partnership with the team at Thomas Dudley, one that has helped us achieve the goal of reducing lost revenue whilst providing a robust alternative to typical sanitaryware that proved costly to replace ”

Tim Wilman, FM Deputy Director
Justice and Immigration UK&E, Serco



The Challenge

HMP & YOI Doncaster cells were previously fitted with Armitage Shanks WC pans & ceramic basins plus Mazak basin brackets. Despite the brackets being tested to 150Kg & breaking at around 200Kg, they were coupled with the expectedly fragile ceramic basins & were unable to withstand the heavy treatment to which they were being exposed.

The prison walls are robustly constructed from concrete so any replacement products needed to be easily retrofittable. In addition, when ceramic sanitaryware shatters, the resulting fragments are extremely sharp & present an obvious & significant security risk. Under the terms of the management contract, Serco loses revenue of around £300 for every night that a cell is left out of service whilst broken sanitaryware is being replaced.

The Solution

Our team began by talking to Serco about the breakages & the resulting operational problems. Site visits were also completed as part of the process in order to better understand the project requirements.

In order to provide a solution, Thomas Dudley's design team exploited state-of-the-art CAD/CAM & rapid prototyping capabilities to configure an alternative. Moulds were then produced along with a sample basin for approval. Thomas Dudley has an award-winning engineering foundry. Here, the team set about developing a new bracket to support the newly designed basin. Engineered

using an exceptionally strong grade of ductile iron, this provided far greater durability than the old Mazak bracket.

Whilst a WC pan from the existing Resan range provided a compatible replacement for the ceramic pans, a bespoke stainless steel backplate was needed in order to comply with the installation requirements approved by Serco. Bespoke anti-swivel taps completed the package.

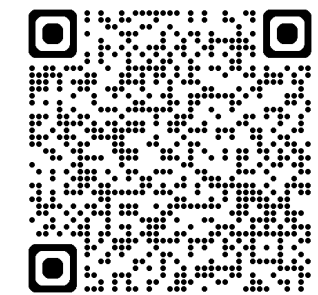
The Result

The partnership with **Thomas Dudley** & the bespoke products from both the Resan & Thomas Dudley range that have been developed have enabled Serco to realise significant benefits:

- ~ 90% reduction in the number of basins and brackets broken
- ~ 95% reduction in the number of WC pans broken
- ~ 40% reduction in typical replacement sanitaryware installation time
- ~ 90% reduction in revenue lost due to cell downtime
- ~ Convenience of being able to order WC pans, basins, brackets and other products from a single source of supply
- ~ Security of and responsiveness of supply via **Thomas Dudley's** customer-driven stock agreements which provide the reassurance of knowing that a guaranteed, predetermined stock level will be maintained for every specified product



Visit our website
to read more



Resan® Sanitaryware // Sinks & Basins



RESAN® OVAL BASIN

RESAN SANITARYWARE // SINKS & BASINS

Damage Resistant Oval Wall Fixed Basin, No Overflow

- Damage resistant basins, ideal for use in all applications where there may be the potential for vandalism, heavy treatment or misuse
- Back to wall design can be mounted using our bespoke fixing bracket (code: 333413)
- Range of activation and control options available, please enquire
- Non-Flammable – BS476 Pt 6 & 7 Class ‘0’ and Class ‘1’
- ISO EN 19712-3-2007 Rated 5 for durability, stain resistance and cigarette burns
- BS EN 14688:2015 Sanitary appliances. Wash basins. Functional requirements and test methods’.
- UKCA/CE Marked

Resan Oval Basin

		Infra-red Control	
Product / Fitting	Finish	Code	Qty
Oval 2 Hole Basin [not anti-ligature]	Polished Resin for Gloss Effect	330813	1
Oval 1 Hole Basin [not anti-ligature]		333973	
Oval Basin Wall Bracket	-	333413	1
Resan basin extended waste	-	332344	1
CP anti-vandal taps [Prisons only]	Chrome Plated	332920	1 or 2
TMV3 15mm	-	324551	1



Resan® Sanitaryware // Sinks & Basins



RESAN® WC PAN - ENSUITE
- STANDARD HEIGHT PNEUMATIC

RESAN SANITARYWARE // WC PANS & TOILETS

- Anti-Ligature
- Damage resistant
- Non-Flammable – BS476 Pt 6 & 7 Class ‘0’ and Class ‘1’
- ISO EN 19712-3-2007 Rated 5 for durability, stain resistance and cigarette burns
- BS EN 997 6/4 Litre and 5/3 Flush Approval
- Supports requirements of WAT 01 BREEAM
- UKCA/CE Marked
- UK Ministry Of Justice Safer Cell Approved [Bolt to wall only]

Resan Pan - Standard Height | Basin | Shower [Pneumatic Controls]

			Pneumatic Controls	Control Length	
Fitting	Finish	Seat	Code		Qty
Bolt To Floor	Polished Resin for Gloss Effect	Plain Seat Open Rim	334084	-	1
		Blue Seat Open Rim	334085	-	
		Grey Seat Open Rim	375048	-	
Plain Seat Open Rim		334077	-		
Bolt To Wall		Blue Seat Open Rim	334086	-	
		Grey Seat Open Rim	375047	-	
Pushflo Cistern with single flush anti-vandal button	-	-	313321	Wall < 42mm	1
Pushflo Cistern with single flush extended anti-vandal button	-	-	324836	Wall < 290mm	
Resan Anti-Ligature Basin [2 holes]	-	-	333883	-	1
Resan Anti-Ligature Basin [1 hole]	-	-	370950		
Pneumatic basin controls 3 sizes available to suit a range of wall thickness's [Wall thickness to be checked by installer]	-	-	332825	Wall < 20mm	1
			326185	Wall < 115mm	
			327822	Wall < 240mm	
			Contractor to check void measurement		
Pneumatic shower control	-	-	326186	Wall < 175mm	1
			Contractor to check void measurement		
Showerhead option wall mounted	-	-	330798	-	1
Showerhead option ceiling mounted	-	-	326184	-	
TMV3 15mm	-	-	324551	-	1



Resan® Sanitaryware // Intelligent Controls // Kits

Resan® Sanitaryware // Intelligent Controls // Kits



RESAN® CONTROL KIT 1 - PIEZO

RESAN SANITARYWARE // INTELLIGENT CONTROLS

Resan® Washroom Control System

- A complete washroom water management system that allows control of hot and cold taps, shower outlet and WC
- Activation of all controls using either infra-red sensors or piezo buttons
- Visual display for easy programming with tactile program buttons
- Programmable run time of hot & cold taps and showers
- Programmable lock out to prevent misuse of all outlets
- Programmable manual purge and chlorination cycle
- Remote key switch option available for out of room washroom shut off
- **Washroom Control Kit 1 - Piezo Controls c/w:**
 - **Washroom Control System**
 - **Input and Output Extension Cables**
 - **x1 Blue Piezo Touch Control**
 - **x2 Red Piezo Touch Control**
 - **x1 Silver Piezo Touch Control**
 - **WC Cistern Interface Control**
 - **x3 Solenoid Valves**



RESAN® CONTROL KIT 2 - INFRA-RED

RESAN SANITARYWARE // INTELLIGENT CONTROLS

Resan® Washroom Control System

- A complete washroom water management system that allows control of hot and cold taps, shower outlet and WC
- Activation of all controls using either infra-red sensors or piezo buttons
- Visual display for easy programming with tactile program buttons
- Programmable run time of hot & cold taps and showers
- Programmable lock out to prevent misuse of all outlets
- Programmable manual purge and chlorination cycle
- Remote key switch option available for out of room washroom shut off
- **Washroom Control Kit 2 - Infra-Red Controls c/w:**
 - **Washroom Control System**
 - **Input and Output Extension Cables**
 - **x1 Blue Infra-Red Touch Control**
 - **x2 Red Infra-Red Touch Control**
 - **x1 Silver Infra-Red Touch Control**
 - **WC Cistern Interface Control**
 - **x3 Solenoid Valves**

Resan Control Kit 1 - Piezo		
Product / Fitting	Code	Qty
Resan Control Kit Piezo	374980	1
Includes the following items:		
4 Way Control Box		1
Piezo Red control		2 [x1 for Basin, x1 for Shower]
Piezo Blue control		1 [Basin]
Piezo Silver control		1 [WC]
Resan WC interface kit		1 [WC]
Solenoid Valves		3 [x2 for Basin, x1 for Shower]

Resan Control Kit 2 - Infra-Red		
Product / Fitting	Code	Qty
Resan Control Kit Infra-Red	374981	1
Includes the following items:		
4 Way Control Box		1
Infra-red Red control		2 [x1 for Basin, x1 for Shower]
Infra-red Blue control		1 [Basin]
Infra-red Silver control		1 [WC]
Resan WC interface kit		1 [WC]
Solenoid Valves		3 [x2 for Basin, x1 for Shower]



Resan® Sanitaryware // Sinks & Basins

RESAN® X2 ANTI-LIGATURE
BASINS - PIEZO CONTROLS

RESAN SANITARYWARE // SINKS & BASINS

Anti-Ligature Basin with Nose and Tap Outlet
Options



- Highest level of anti-ligature design available; we most frequently deploy this version of the basin in healthcare and mental health environments
- Damage resistant basins, ideal for use in all applications where there may be the potential for vandalism, heavy treatment or misuse
- Back to wall design allows all pipework to be safely concealed
- Back to wall design allows all pipework to be safely concealed
- Non-Flammable - BS476 Pt 6 & 7 Class '0' and Class '1'
- ISO EN 19712-3-2007 Rated 5 for durability, stain resistance and cigarette burns
- UK Ministry Of Justice Safer Cell Approved
- UK Ministry Of Justice Safer Cell Approved
- BS EN 14688:2015 Sanitary appliances. Wash basins. Functional requirements and test methods'
- UKCA/CE Marked
- All controls and solenoids come with 4 metre leads. Extension 4 metre leads available. Input (control) 374581. Output cable (solenoids) 374582
- For further information contact sales@thomasdudley.co.uk

x2 Anti-Ligature Basins		
Product / Fitting	Code	Qty
Resan Anti-Ligature Basin [2 holes]	374417	2
4 Way Control Box	374572	1
Piezo Red control	374593	2
Piezo Blue control	384594	2
Solenoid Valves	374578	4
TMV3 15mm	324551	2



Resan® Sanitaryware // Sinks & Basins

RESAN® X2 ANTI-LIGATURE
BASINS - INFRA-RED CONTROLS

RESAN SANITARYWARE // SINKS & BASINS

Anti-Ligature Basin with Nose and Tap Outlet
Options



- Highest level of anti-ligature design available; we most frequently deploy this version of the basin in healthcare and mental health environments
- Damage resistant basins, ideal for use in all applications where there may be the potential for vandalism, heavy treatment or misuse
- Back to wall design allows all pipework to be safely concealed
- Back to wall design allows all pipework to be safely concealed
- Non-Flammable - BS476 Pt 6 & 7 Class '0' and Class '1'
- ISO EN 19712-3-2007 Rated 5 for durability, stain resistance and cigarette burns
- UK Ministry Of Justice Safer Cell Approved
- UK Ministry Of Justice Safer Cell Approved
- BS EN 14688:2015 Sanitary appliances. Wash basins. Functional requirements and test methods'
- UKCA/CE Marked
- All controls and solenoids come with 4 metre leads. Extension 4 metre leads available. Input (control) 374581. Output cable (solenoids) 374582
- For further information contact sales@thomasdudley.co.uk

x2 Anti-Ligature Basins		
Product / Fitting	Code	Qty
Resan Anti-Ligature Basin [2 holes]	374417	2
4 Way Control Box	374572	1
Infra-red Red control	374596	2
Infra-red Blue control	374613	2
Solenoid Valves	374578	4
TMV3 15mm	324551	2



Resan® Sanitaryware // WC Pans & Toilets



RESAN® X4 WC'S - PIEZO CONTROLS

RESAN SANITARYWARE // WC PANS & TOILETS

Anti-Ligature and Damage Resistant Toilet Pans

- All controls and solenoids come with 4 metre leads. Extension 4 metre leads available. Input (control) 374581. Output cable (solenoids) 374582
- Suitable for use with other Vitreous china WC's
- For further information contact sales@thomasdudley.co.uk



x4 WC's

Product / Fitting	Code	Qty
Resan Pan	Any [example shown]	4
4 Way Control Box	374572	1
Miniflo cistern	326510	4
Piezo Silver control	374595	4
Resan WC interface kit	374580	4



Resan® Sanitaryware // WC Pans & Toilets



RESAN® X4 WC'S - INFRA-RED CONTROLS

RESAN SANITARYWARE // WC PANS & TOILETS

Anti-Ligature and Damage Resistant Toilet Pans

- All controls and solenoids come with 4 metre leads. Extension 4 metre leads available. Input (control) 374581. Output cable (solenoids) 374582
- Suitable for use with other Vitreous china WC's
- For further information contact sales@thomasdudley.co.uk

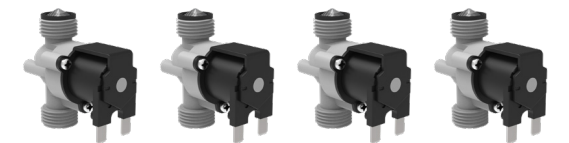
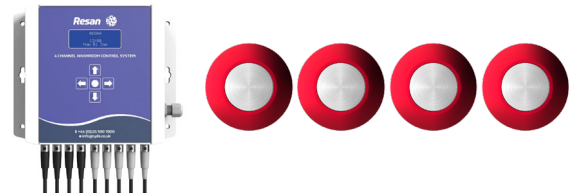


x4 WC's

Product / Fitting	Code	Qty
Resan Pan	Any [example shown]	4
4 Way Control Box	374572	1
Miniflo cistern	326510	4
Infra-red Silver control	374614	4
Resan WC interface kit	374580	4



Resan® Sanitaryware // Options // Showers



RESAN® X4 SHOWERS
PIEZO CONTROLS

RESAN SANITARYWARE // OPTIONS

Vandal Resistant Anti-Ligature Wall Mounted /
Ceiling Mounted Shower Head

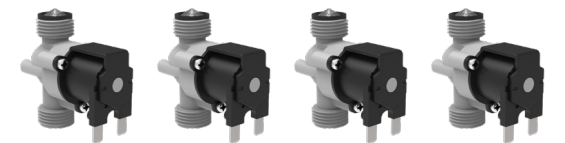
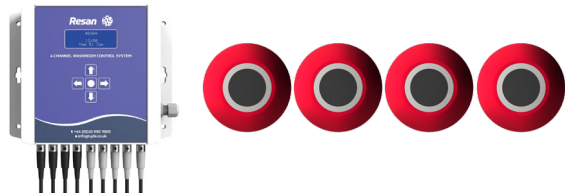
- Wall Mounted
 - Fixed, wall mounted
 - For use with walls up to 230mm thick
 - Automatic flow rate regulation
 - Anti-ligature design
 - Scale-resistant
 - Adjustable spray nozzle with locking feature
 - Concealed fixings
 - Systematically drains after use (no water retention or impurity deposits)
 - 10 year warranty
 - Anti swivel lug
- Ceiling Mounted
 - Vandal proof, anti-ligature shower for use in the healthcare & secure sector
 - Vandal resistant robust construction
 - Anti-ligature design
 - Stainless steel finish
 - Chrome plated brass body
 - Other sized tails are available, please enquire
- Suitable for use with other shower heads
- For further information contact sales@thomasdudley.co.uk

x4 Showers

Product / Fitting	Code	Qty
Wall mounted Showerhead	330798	4
Ceiling mounted Showerhead	326184	
4 Way Control Box	374572	1
Piezo Red control	374593	4
Solenoid valves	374578	4
TMV3 15mm	324551	4



Resan® Sanitaryware // Options // Showers



RESAN® X4 SHOWERS
INFRA-RED CONTROLS

RESAN SANITARYWARE // OPTIONS

Vandal Resistant Anti-Ligature Wall Mounted /
Ceiling Mounted Shower Head

- Wall Mounted
 - Fixed, wall mounted
 - For use with walls up to 230mm thick
 - Automatic flow rate regulation
 - Anti-ligature design
 - Scale-resistant
 - Adjustable spray nozzle with locking feature
 - Concealed fixings
 - Systematically drains after use (no water retention or impurity deposits)
 - 10 year warranty
 - Anti swivel lug
- Ceiling Mounted
 - Vandal proof, anti-ligature shower for use in the healthcare & secure sector
 - Vandal resistant robust construction
 - Anti-ligature design
 - Stainless steel finish
 - Chrome plated brass body
 - Other sized tails are available, please enquire
- Suitable for use with other shower heads
- For further information contact sales@thomasdudley.co.uk

x4 Showers

Product / Fitting	Code	Qty
Wall mounted Showerhead	330798	4
Ceiling mounted Showerhead	326184	
4 Way Control Box	374572	1
Infra-Red Red control	374596	4
Solenoid valves	374578	4
TMV3 15mm	324551	4



Resan® Sanitaryware // WC Direct Flush Valve

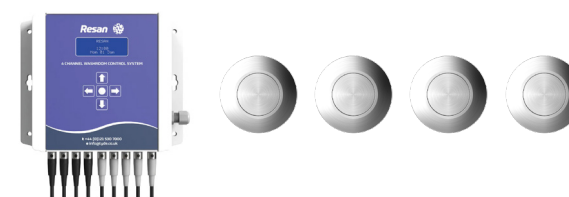


RESAN® X4 DIRECT FLUSH VALVES PIEZO CONTROLS

RESAN SANITARYWARE // OPTIONS

Controlling water supply to the WC pan

- Used in combination with our Washroom Control System to provide complete control over the flush operation without the need for a concealed cistern
- Dual flush or single flush programmable
- Supplied with pipe interruptor for compliance to Water Regulations, all fittings & accessories and includes 4m Output Cable
- Fasten Electrical Terminal connections for ease of installation
- No polarity on Electrical Terminal connections
- Recommended min required flow rate is 100LPM (Litres Per Minute) & a flow regulator is pre fitted to govern flow rates exceeding this
- All controls and solenoids come with 4 metre leads. Extension 4 metre leads available. Input (control) 374581. Output cable (solenoids) 374582
- Suitable for use with other Vitreous china WC's
- For further information contact sales@thomasdudley.co.uk



x4 Direct Flush Valves

Product / Fitting	Code	Qty
4 Way Control Box	374572	1
Resan Pan	Any [example shown]	4
Direct Flush Valve	374577	4
Flush Pipe 610 x610 x 38mm	363703	4
Piezo Silver Control	374595	4



Resan® Sanitaryware // Options // WC Direct Flush Valve



RESAN® X4 DIRECT FLUSH VALVES INFRA-RED CONTROLS

RESAN SANITARYWARE // OPTIONS

Controlling water supply to the WC pan

- Used in combination with our Washroom Control System to provide complete control over the flush operation without the need for a concealed cistern
- Dual flush or single flush programmable
- Supplied with pipe interruptor for compliance to Water Regulations, all fittings & accessories and includes 4m Output Cable
- Fasten Electrical Terminal connections for ease of installation
- No polarity on Electrical Terminal connections
- Recommended min required flow rate is 100LPM (Litres Per Minute) & a flow regulator is pre fitted to govern flow rates exceeding this
- All controls and solenoids come with 4 metre leads. Extension 4 metre leads available. Input (control) 374581. Output cable (solenoids) 374582
- Suitable for use with other Vitreous china WC's
- For further information contact sales@thomasdudley.co.uk



x4 Direct Flush Valves

Product / Fitting	Code	Qty
4 Way Control Box	374572	1
Resan Pan	Any [example shown]	4
Direct Flush Valve	374577	4
Flush Pipe 610 x610 x 38mm	363703	4
Infra-Red Silver Control	374614	4



Resan® Sanitaryware // Others



OTHER PRODUCTS RELATED TO RESAN®

RESAN SANITARYWARE // OTHERS

Resan® Left/Right Hand WC Corner Pan Standard Height

- Anti-ligature and damage resistant
- Non-Flammable – BS476 Pt 6 & 7 Class '0' and Class '1'
- ISO EN 19712-3-2007 Rated 5 for durability, stain resistance and cigarette burns
- BS EN 997 6/4 Litre and 5/3 Flush Approval
- BS EN 33:2019 WC pans and WC suites- Connecting Dimensions
- Supports requirements of WAT 01 BREEAM
- UKCA/CE Marked
- UK Ministry of Justice Safer Cell Approval Pending

Resan® Inset Basin

- Anti-ligature and damage resistant
- Optional waste grille [375052]
- Non-Flammable – BS476 Pt 6 & 7 Class '0' and Class '1'
- ISO EN 19712-3-2007 Rated 5 for durability, stain resistance and cigarette burns
- BS EN 14688:2015 Sanitary appliances. Wash basins. Functional requirements and test methods
- UKCA/CE Marked
- For further information contact sales@thomasdudley.co.uk

Resan Left Hand WC Corner Pan - Standard Height

Product / Fitting	Finish	Seat	Code
Bolt To Wall	Polished Resin for Gloss Effect	Plain Seat Open Rim	374586
Bolt To Wall	Polished Resin for Gloss Effect	Blue Seat Open Rim	375034
Bolt To Wall	Polished Resin for Gloss Effect	Grey Seat Open Rim	375044

Resan Right Hand WC Corner Pan - Standard Height

Bolt To Wall	Polished Resin for Gloss Effect	Plain Seat Open Rim	375035
Bolt To Wall	Polished Resin for Gloss Effect	Blue Seat Open Rim	375045
Bolt To Wall	Polished Resin for Gloss Effect	Grey Seat Open Rim	375046

Resan Inset Basin

Resan Inset Basin for use with Infra-red Piezo Controls [sold separately]	-	-	374585
Resan Inset Basin for use with Pneumatic Controls [sold separately]	-	-	375256
Resan through wall extension kit for Piezo/Infra-red controls [100mm]	-	-	374575
Resan through wall extension kit for Piezo/Infra-red controls [200mm]	-	-	374576



Resan® Sanitaryware // Others

OTHER PRODUCTS RELATED TO RESAN®

RESAN SANITARYWARE // OTHERS

Resan® Damage Resistant Urinal

- Anti-ligature and damage resistant
- Can be teamed with water-saving electronic urinal controls that support BREEAM and other initiative
- Non-Flammable – BS476 Pt 6 & 7 Class '0' and Class '1'
- ISO EN 19712-3-2007 Rated 5 for durability, stain resistance and cigarette burns
- BS EN 13407:2006 Wall-hung urinals. Functional requirements and test methods'.
- UKCA/CE Marked

Resan® Anti-Ligature Shelf

- Anti-ligature and damage resistant
- Ideal for use in conjunction with Resan sanitaryware to create damage resistant installations in all commercial applications
- UK Ministry of Justice (NOMS) Safer Cell approval

Resan® Mirror Frame System

- Anti-ligature and damage resistant
- 3mm thick tough polycarbonate that is vandal and scratch resistant while also not flexing easily. Important for dementia sufferers as well as custodial applications where weaponising of a broken product must be avoided
- Non-Flammable – BS476 Pt 6 & 7 Class '0' and Class '1'
- ISO EN 19712-3-2007 Rated 5 for durability, stain resistance and cigarette burns
- For further information contact sales@thomasdudley.co.uk



Resan® Urinal

Product / Fitting	Finish	Code
Resan Urinal	Polished Resin for Gloss Effect	325601
Dudley Electroflo® Touch Free Urinal Sensor [mains operated]	Chrome	323687
Accessories Waste/Spreader & Trap Kit	-	327395

Resan® Shelf

Resan Shelf - Rear Fixed	Polished Resin for Gloss Effect	326144
Resan Shelf - Front Fixed	Polished Resin for Gloss Effect	331493

Resan® Mirror

Resan Mirror 350 x 450mm Rear Fixed	Polished Resin for Gloss Effect	326147
Resan Mirror 500 x 600mm Rear Fixed	Polished Resin for Gloss Effect	334297
Resan Mirror 350 x 450mm Front Fixed	Polished Resin for Gloss Effect	371636
Resan Mirror 500 x 600mm Front Fixed	Polished Resin for Gloss Effect	374414



Case Study

Wells Commercial Refurbishment Solutions Ltd - Public Toilets

“The new toilet block is an important facility for the popular High Street and anti-vandal sanitaryware was essential. The Resan® range from Dudley was perfect for what we needed and the experts at Thomas Dudley were fantastic throughout the project from our initial conversation to completion”

Gary Wells, Wells Commercial Refurbishment Solutions Ltd



The Challenge

Thomas Dudley was recently approached by Gary Wells at Wells Commercial Refurbishment Solutions Ltd who were looking for a solution for a project they were working on for the refurbishment of Norton public toilets on behalf of Stockton on Tees Borough Council. The brief that Garry and his team had from Stockton on Tees Borough Council included a requirement for Anti-Vandal WC Pans and Basins.

The Solution

After researching our Resan® products online the team at Wells Commercial Refurbishment contacted one of our Business Development Managers to find out more about what kind of solution we could provide. After some initial discussions we were invited to meet with Garry and his team to go through the requirements of the project in more depth.

Over a period of time, we worked together to create a comprehensive list of exactly what would be needed to complete the job to the high standards demanded by Stockton on Tees Borough Council. We provided samples of our recommended

products to Garry and his team and satisfied that Resan® was what they were looking for, Wells CRS placed the order for our products via Crossings Merchants in Stockton on Tees.

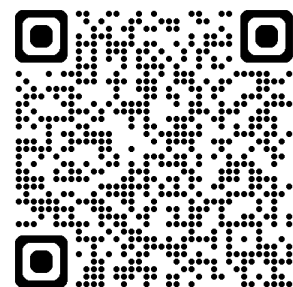
The Result

In order to ensure that the installation of the products went smoothly for Wells, our Resan® Specification Manager attended the site several times to offer advice and suggestions on all aspects of installation and setup. This helped to ensure that Garry and his team at Wells CRS met the high expectations of their client who were delighted with the finished project. Stockton on Tees Borough Council are confident that the finished project will serve the community of Norton for many years to come.

This project highlights the benefits of using our Resan® products on projects of this type due to their damage resistant qualities. It also provides further evidence that the excellent onsite expertise and service we can offer to contractors will always guarantee the best quality finishes.



Visit our website
to read more



Case Study

Henman & Cooper - Cocktail Bar

“I was really happy with the whole experience from my initial conversation with Anthony to purchase and installation. The WC's back-to-wall feature hides the cistern and saves space and most importantly they are vandal-proof which is just what we need. I was so impressed, Thomas Dudley have also helped to install WC's at one of my other bars. I wouldn't hesitate to recommend them. Superb products and service”

Wayne Tracey, Owner of Henman & Cooper Bar



The Challenge

Housed within a Grade II building in Birmingham City Centre, Henman & Cooper Bar is a quirky cocktail bar with rooftop terrace created by Wayne Tracey, owner of a collection of bars including popular nightclub Snobs

The innovative bar was transformed in 2019 and owner Wayne required the installation of high-quality bathroom products to compliment the modern décor but it needed to be robust to withstand the hardest of treatment.

The Solution

Thomas Dudley Business Development Manager, Anthony McDonagh met with Wayne to discuss his exact requirements. Anthony visited the venue to inspect the area to determine which of the Thomas Dudley

products would be most suitable. Internal discussions then took place with the Thomas Dudley product and design teams. We engaged our client and made recommendations based on the best solution to meet his needs. The Resan® range is manufactured to the highest standard and is engineered from an advanced polymer resin material which is shatterproof, hard-wearing and chemical resistant. This makes the products perfect for Property Managers looking for vandal resistant sanitaryware.

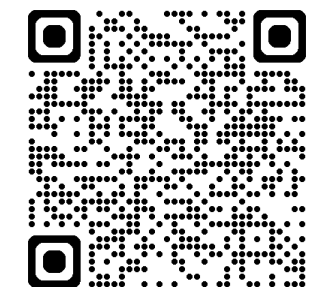
The Result

Wayne Tracey, the owner of Henman & Cooper was left extremely happy with the everything from start to finish; the project support he received helped create the exact specification required for the job and the vandal-resistant features provided were exactly what Wayne was looking for. The support and products received have now been extended to other bars under Waynes ownership.

HENMAN AND COOPER
BAR & ROOFTOP



Visit our website
to read more





The source of **clever plumbing products and people**



SPECIFICATION SALES MANAGER

p +44 (0) 7717 200699

**NORTH
PUBLIC SECTOR**

p +44 (0) 7747 446146

**NORTH
PRIVATE SECTOR**

p +44 (0) 7711 800166

**SOUTH
PUBLIC SECTOR**

p +44 (0) 7803 890796

**SOUTH
PRIVATE SECTOR**

p +44 (0) 7867 170142

CUSTOMER SERVICE

e sales@thomasdudley.co.uk

p +44(0) 121 557 5411

CREDIT CONTROL

e accounts@thomasdudley.co.uk

MARKETING

e info@thomasdudley.co.uk

UK ENQUIRIES

t +44 (0)121 530 7000

or e sales@thomasdudley.co.uk

