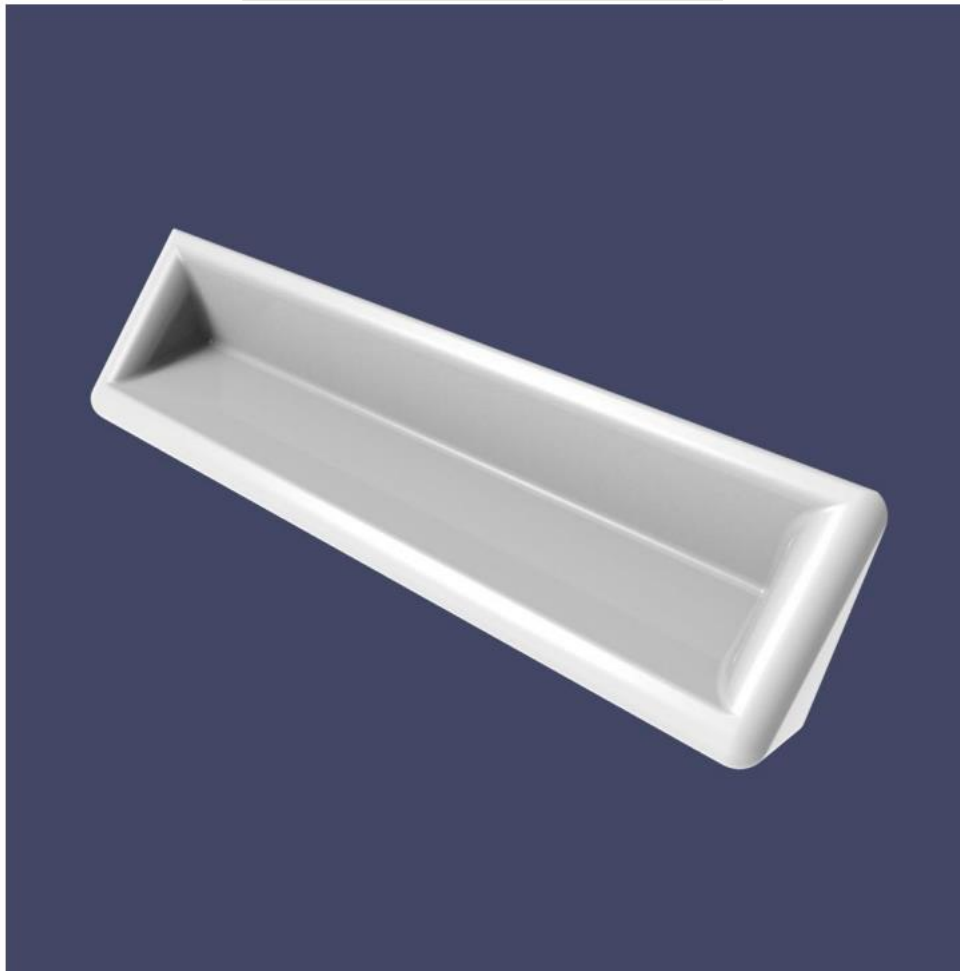


**Rear Fixing Instructions**

[12271 iss1 R327139]

**Important**

Please read these instructions carefully before installation.

Disclaimer

1. The specifications of this product can change without notice as a result of continual product development.
2. These instructions are intended to be a general guide only as specific conditions vary from installation to installation.
3. The images in these instructions are for illustrative purposes only and may vary slightly from the actual product as a result of continual product development.
4. Check the product for defects or damage prior to fitting. Fitting the product is an acceptance that the product is free from defects and Thomas Dudley Limited cannot retrospectively accept responsibility for any defects subsequently discovered.

Component Checklist**Through Wall Installation**

1. Shelf
2. 3 x M10 threaded fixing studs
3. 3 x M10 lock nuts
4. 4 x M10 washers

TYDE

295 Birmingham New Road
Dudley, West Midlands
United Kingdom
DY1 4SJ

A Thomas Dudley Business

t +44 (0)121 557 5411

f +44 (0)121 557 5345

e info@tyde.co.uk

w www.thomasdudley.co.uk/tyde





5. Paper drilling template
6. Instruction leaflet

Equipment Checklist: Not Supplied

1. Drill and masonry bits suitable to create required holes
2. Adjustable Spanner
3. Spirit level
4. Pencil

Unpacking

1. Unpack the shelf and rest on a soft grit free surface to avoid scratches or other damage to the surface finish.
2. Check for any defects.

Wall Preparation

1. Ensure that the wall surface where the shelf is to be mounted is vertical, flat and free from protrusions and debris.
2. Ensure that the wall to which the shelf is fitted is structurally sound and capable of supporting the 8kg weight of the shelf.
3. Affix the paper drilling template to the wall at a height in accordance with the local recommended standards using masking tape, ensuring that it is level and crease free.
4. Using a pencil, mark the hole centres for either the 3 off mounting positions.
5. Remove the template and drill holes through the wall as required.
6. Remove all debris from the holes.

Installation using Through Wall fixings.**Shelf Preparation**

1. Hand tighten the 3 off M10 threaded fixing studs into the threaded inserts on the back of the mirror. If the supplied rods are not long enough to pass through the wall it will be necessary to cut lengths of standard M10 all-thread down to the correct size.

Fixing the shelf

Note: Fitting the shelf may require two people: one to lift and hold the basin into position while the other secures it.

1. Lift the shelf and slide into position taking care not to damage either the shelf surface or the fixing studs.
2. From the other side of the wall secure the shelf into position using M10 washers and locknuts. Ensure that there is enough thread to fully engage the locknut.

Maintenance

1. It is not recommended that proprietary products be used for cleaning as the vast range of different chemical composition makes it impractical to test individually with the shelf.
2. Do not use scouring pads, abrasive cleaners, or sharp instruments. In hard water areas lime scale removers can be used to remove lime scale deposits if necessary.
3. Clean regularly using warm soapy water.
4. Matt Finish Shelves: Deeper cuts can be removed with 1200 grade wet and dry paper.
5. Gloss Finish Shelves: Light scratches and abrasions can be removed by rubbing with a soft cloth and liquid cutting compound.

**Front Fixing Instructions**

[14366 iss1 R334410]

**Important**

Please read these instructions carefully before installation.

Disclaimer

5. The specifications of this product can change without notice as a result of continual product development.
6. These instructions are intended to be a general guide only as specific conditions vary from installation to installation.
7. The images in these instructions are for illustrative purposes only and may vary slightly from the actual product as a result of continual product development.
8. Check the product for defects or damage prior to fitting. Fitting the product is an acceptance that the product is free from defects and Thomas Dudley Limited cannot retrospectively accept responsibility for any defects subsequently discovered.

TYDE

295 Birmingham New Road
Dudley, West Midlands
United Kingdom
DY1 4SJ

A Thomas Dudley Business

t +44 (0)121 557 5411

f +44 (0)121 557 5345

e info@tyde.co.uk

w www.thomasdudley.co.uk/tyde





Component Checklist

Front Fixings Installation

7. Shelf
8. Paper drilling template
9. Instruction leaflet

Equipment Checklist: Not Supplied

5. Drill and masonry bits suitable to create required holes
6. Adjustable Spanner
7. Spirit level
8. Pencil

Unpacking

3. Unpack the shelf and rest on a soft grit free surface to avoid scratches or other damage to the surface finish.
4. Check for any defects.

Wall Preparation

7. Ensure that the wall surface where the shelf is to be mounted is vertical, flat and free from protrusions and debris.
8. Ensure that the wall to which the shelf is fitted is structurally sound and capable of supporting the 8kg weight of the shelf.
9. Affix the paper drilling template to the wall at a height in accordance with the local recommended standards using masking tape, ensuring that it is level and crease free.
10. Using a pencil, mark the hole centres for either the 3 off mounting positions.
11. Remove the template and drill holes through the wall as required.
12. Remove all debris from the holes.

Installation using Front Fixings.

Fixing the shelf

Note: Fitting the shelf may require two people: one to lift and hold the basin into position while the other secures it.

3. Lift the shelf and slide into position taking care not to damage the shelf.
4. Fix the shelf using the front fixing holes.

Maintenance

6. It is not recommended that proprietary products be used for cleaning as the vast range of different chemical composition makes it impractical to test individually with the shelf.
7. Do not use scouring pads, abrasive cleaners, or sharp instruments.
8. In hard water areas lime scale removers can be used to remove lime scale deposits if necessary.
9. Clean regularly using warm soapy water.
10. Matt Finish Shelves: Deeper cuts can be removed with 1200 grade wet and dry paper.
11. Gloss Finish Shelves: Light scratches and abrasions can be removed by rubbing with a soft cloth and liquid cutting compound.