

Resan®
Sanitaryware
2023-24

Resan



- ~ WC Pans & Toilets
- ~ Sinks & Basins
- ~ Urinal Units
- ~ Mirror Frames & Shelving
- ~ Intelligent Controls
- ~ Options
- ~ Case Study



The source of **clever plumbing products and people**

Resan® Sanitaryware // WC Pans & Toilets



RESAN® WC PAN - STANDARD HEIGHT

RESAN SANITARYWARE // WC PANS & TOILETS

Anti-Ligature and Damage Resistant Toilet Pan Standard Height with Polished Resin for Gloss Effect

- Anti-Ligature
- Damage resistant
- Standard white WC pans are cast in a single piece, reducing join joints which are difficult to clean and enhancing strength
- The waste spigot height is 180mm (BS EN 33)
- Contrasting colour integral seats are available with a range of Resan WC Pans
- Non-Flammable – BS476 Pt 6 & 7 Class '0' and Class '1'
- ISO EN 19712-3-2007 Rated 5 for durability, stain resistance and cigarette burns
- BS EN 997 6/4 Litre and 5/3 Flush Approval
- BS EN 33:2019 WC pans and WC suites- Connecting Dimensions
- Supports requirements of WAT 01 BREEAM
- UKCA/CE Marked
- UK Ministry of Justice Safer Cell Approval Pending

Resan Pan - Standard Height

Fitting	Finish	Seat	Code
Bolt To Floor	Polished Resin for Gloss Effect	Plain Seat Open Rim	334084
Bolt To Floor	Polished Resin for Gloss Effect	Blue Seat Open Rim	334085
Bolt To Floor	Polished Resin for Gloss Effect	Grey Seat Open Rim	375048
Bolt To Wall	Polished Resin for Gloss Effect	Plain Seat Open Rim	334077
Bolt To Wall	Polished Resin for Gloss Effect	Blue Seat Open Rim	334086
Bolt To Wall	Polished Resin for Gloss Effect	Grey Seat Open Rim	375047

Resan® Sanitaryware // WC Pans & Toilets



RESAN RESAN® WC PAN - LESS ABLED

RESAN SANITARYWARE // WC PANS & TOILETS

Anti-Ligature and Damage Resistant Toilet Pan for Less Able with Polished Resin for Gloss Effect

- Anti-Ligature
- Damage resistant
- These are particularly suitable for public washrooms which must conform to Approved Document M as well as environments such as Care Homes and Disabled Washroom facilities
- This raised height WC is considered as 'comfort height' being 480mm high rather than the standard 415mm
- Standard white WC pans are cast in a single piece, reducing join joints which are difficult to clean and enhancing strength
- Contrasting colour integral seats are available with a range of Resan WC Pans
- The waste spigot height is 283mm
- Extension Box **NOT** fitted as standard
- An extension box can also be provided which extends the projection of the pan out from the wall to 750mm from the standard 500mm
- Non-Flammable – BS476 Pt 6 & 7 Class '0' and Class '1'
- ISO EN 19712-3-2007 Rated 5 for durability, stain resistance and cigarette burns
- BS EN 997 6/4 Litre and 5/3 Flush Approval
- Supports requirements of WAT 01 BREEAM
- UKCA/CE Marked

Resan Pan - Less Abled

Fitting	Finish	Seat	Code
Bolt to Floor	Polished Resin for Gloss Effect	Plain	372561
Bolt to Floor	Polished Resin for Gloss Effect	Plain Blue	372562
Bolt to Floor	Polished Resin for Gloss Effect	Plain Grey	372563
Bolt to Wall	Polished Resin for Gloss Effect	Plain	372558
Bolt to Wall	Polished Resin for Gloss Effect	Plain Blue	372559
Bolt to Wall	Polished Resin for Gloss Effect	Plain Grey	372560
Extension Box Only			372564

Resan® Sanitaryware // WC Pans & Toilets



RESAN® WC PAN - STANDARD HEIGHT - WITH SEAT FIXING HOLES

RESAN SANITARYWARE // WC PANS & TOILETS

Damage Resistant Toilet Pan Standard Height with Polished Resin for Gloss Effect - With Seat Fixing Holes

- Damage resistant
- Standard white WC pans are cast in a single piece, reducing join joints which are difficult to clean and enhancing strength
- The waste spigot height is 180mm (BS EN 33)
- Seat is **NOT** included but is available with this model [320725]
- Contrasting colour integral seats are available with a range of Resan WC Pans.
- Non-Flammable – BS476 Pt 6 & 7 Class ‘0’ and Class ‘1’
- ISO EN 19712-3-2007 Rated 5 for durability, stain resistance and cigarette burns
- BS EN 997 6/4 Litre and 5/3 Flush Approval
- BS EN 33:2019 WC pans and WC suites- Connecting Dimensions
- Supports requirements of WAT 01 BREEAM
- UKCA/CE Marked

Resan Pan - Standard Height - With Seat Fixing Holes

Fitting	Finish	Fixing	Code
Bolt To Wall	Polished Resin for Gloss Effect	Seat Fixing Holes	334080
Bolt To Floor	Polished Resin for Gloss Effect	Seat Fixing Holes	334082

Seat Option

Item	Code
Eve White - Thermoset Plastic Toilet Seat	320725
C33 Top Fix Easy Fit Stainless Steel Hinge	320913

Resan® Sanitaryware // WC Pans & Toilets



RESAN® WC PAN - LESS ABLED - WITH SEAT FIXING HOLES

RESAN SANITARYWARE // WC PANS & TOILETS

Damage Resistant Toilet Pan for Less Able with Polished Resin for Gloss Effect - With Seat Fixing Holes

- Damage resistant
- This raised height WC is considered as 'comfort height' being 480mm high rather than the standard 415mm
- The waste spigot height is 283mm
- Seat is NOT included but is available with this model [320725]
- Contrasting colour integral seats are available with a range of Resan WC Pans
- Non-Flammable – BS476 Pt 6 & 7 Class '0' and Class '1'
- ISO EN 19712-3-2007 Rated 5 for durability, stain resistance and cigarette burns
- BS EN 997 6/4 Litre and 5/3 Flush Approval
- Supports requirements of WAT 01 BREEAM
- UKCA/CE Marked
- UK Ministry of Justice Safer Cell Approval Pending

Resan Pan - Less Abled - With Seat Fixing Holes

Fitting	Finish	Fixing	Code
Bolt To Wall	Polished Resin for Gloss Effect	Seat Fixing Holes	328094
Bolt To Floor	Polished Resin for Gloss Effect	Seat Fixing Holes	328096

Seat Option

Item	Code
Eve White - Thermoset Plastic Toilet Seat	320725
C33 Top Fix Easy Fit Stainless Steel Hinge	320913



Resan® Sanitaryware // WC Pans & Toilets



RESAN® LEFT HAND WC CORNER PAN - STANDARD HEIGHT

RESAN SANITARYWARE // WC PANS & TOILETS

Anti-Ligature and Damage Resistant Left Hand Corner Toilet Pan Standard Height with Polished Resin for Gloss Effect

- Anti-Ligature
- Damage resistant
- Designed for seatless use
- Prevents hidden corners
- Concealed through-wall services and fixings
- Standard white WC pans are cast in a single piece, reducing join joints which are difficult to clean and enhancing strength
- The waste spigot height is 180mm (BS EN 33)
- Other contrasting colour integral seats are available with a range of Resan WC Pans
- Non-Flammable – BS476 Pt 6 & 7 Class ‘0’ and Class ‘1’
- ISO EN 19712-3-2007 Rated 5 for durability, stain resistance and cigarette burns
- BS EN 997 6/4 Litre and 5/3 Flush Approval
- BS EN 33:2019 WC pans and WC suites- Connecting Dimensions
- Supports requirements of WAT 01 BREEAM
- UKCA/CE Marked
- UK Ministry of Justice Safer Cell Approval Pending



Resan Left Hand WC Corner Pan - Standard Height

Fitting	Finish	Seat	Code
Bolt To Wall	Polished Resin for Gloss Effect	Plain Seat Open Rim	374586
Bolt To Wall	Polished Resin for Gloss Effect	Blue Seat Open Rim	375034
Bolt To Wall	Polished Resin for Gloss Effect	Grey Seat Open Rim	375044

Resan® Sanitaryware // WC Pans & Toilets

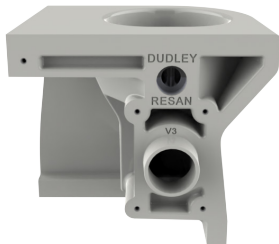


RESAN® RIGHT HAND WC CORNER PAN - STANDARD HEIGHT

RESAN SANITARYWARE // WC PANS & TOILETS

Anti-Ligature and Damage Resistant Right Hand Corner Toilet Pan Standard Height with Polished Resin for Gloss Effect

- Anti-Ligature
- Damage resistant
- Designed for seatless use
- Prevents hidden corners
- Concealed through-wall services and fixings
- Standard white WC pans are cast in a single piece, reducing join joints which are difficult to clean and enhancing strength
- The waste spigot height is 180mm (BS EN 33)
- Contrasting colour integral seats are available with a range of Resan WC Pans
- Non-Flammable – BS476 Pt 6 & 7 Class ‘0’ and Class ‘1’
- ISO EN 19712-3-2007 Rated 5 for durability, stain resistance and cigarette burns
- BS EN 997 6/4 Litre and 5/3 Flush Approval
- BS EN 33:2019 WC pans and WC suites- Connecting Dimensions
- Supports requirements of WAT 01 BREEAM
- UKCA/CE Marked
- UK Ministry of Justice Safer Cell Approval Pending



Resan Right Hand WC Corner Pan - Standard Height

Fitting	Finish	Seat	Code
Bolt To Wall	Polished Resin for Gloss Effect	Plain Seat Open Rim	375035
Bolt To Wall	Polished Resin for Gloss Effect	Blue Seat Open Rim	375045
Bolt To Wall	Polished Resin for Gloss Effect	Grey Seat Open Rim	375046



Resan® Sanitaryware // Sinks & Basins



Infra-red | Piezo Touch Controls
[sold separately]



Pneumatic Controls
[sold separately]

RESAN® INSET BASIN

RESAN SANITARYWARE // SINKS & BASINS

A highly robust basin for use in the most demanding anti-ligature applications.

- Anti-Ligature
- Damage resistant basins, ideal for use in all applications where there may be the potential for vandalism, heavy treatment or misuse
- Fits where space is at a premium and where enhance anti-ligature qualities are required
- Cast in a single piece with no join joints
- Used in combination with our Washroom Control System [374572] which can manage activation run times, purges and lock out management
- Water flow can be activated using Infra-red, Piezo or Pneumatic controls, **sold separately** - please see pages 15
- Easily renewable surface - no gel coat
- Optional waste grille [375052]
- Non-Flammable – BS476 Pt 6 & 7 Class '0' and Class '1'
- ISO EN 19712-3-2007 Rated 5 for durability, stain resistance and cigarette burns
- BS EN 14688:2015 Sanitary appliances. Wash basins. Functional requirements and test methods
- UKCA/CE Marked



Product	Code
Resan Inset Basin for use with Infra-red Piezo Controls [sold separately]	374585
Resan Inset Basin for use with Pneumatic Controls [sold separately]	375256

Resan® Sanitaryware // Sinks & Basins

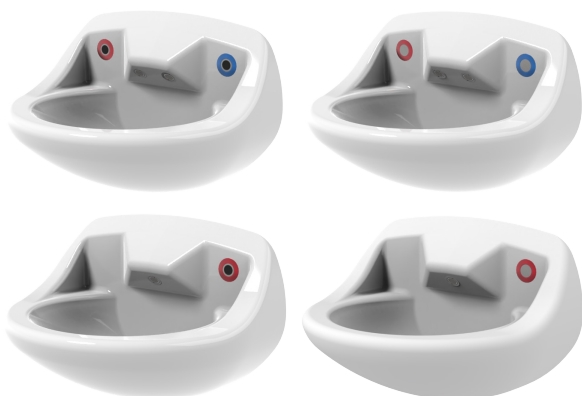


RESAN® ANTI-LIGATURE BASIN

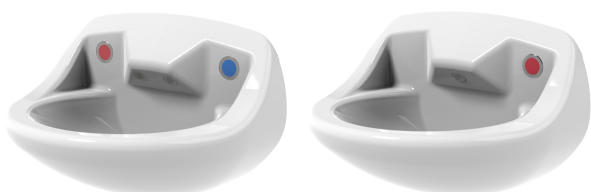
RESAN SANITARYWARE // SINKS & BASINS

Anti-Ligature Basin With Nose and Tap Outlets

- Highest level of anti-ligature design available; we most frequently deploy this version of the basin in healthcare and mental health environments
- Damage resistant basins, ideal for use in all applications where there may be the potential for vandalism, heavy treatment or misuse
- Water flow can be activated using Infra-red, Piezo or Pneumatic controls, sold separately - please see pages 15
- Easily renewable surface - no gel coat
- Back to wall design allows all pipework to be safely concealed
- Sensors | buttons can be used in through-wall applications up to 300mm thick when using extension piece
- Non-Flammable - BS476 Pt 6 & 7 Class '0' and Class '1'
- ISO EN 19712-3-2007 Rated 5 for durability, stain resistance and cigarette burns
- UK Ministry Of Justice Safer Cell Approved
- BS EN 14688:2015 Sanitary appliances. Wash basins. Functional requirements and test methods
- UKCA/CE Marked



Infra-red | Piezo Touch Controls
[sold separately]



Pneumatic Controls
[sold separately]



Product	Code
Resan Anti-Ligature Basin for use with: Nose & x2 Tap Outlet for: Infra-red Piezo Controls [sold separately]	374417
Resan Anti-Ligature Basin for use with: Nose & x1 Tap Outlet for: Right Hand Infra-red Piezo Controls [sold separately]	374418
Resan Anti-Ligature Basin for use with: Nose & x2 Tap Outlet for: Wash Basin Pneumatic Controls [sold separately]	333883
Resan Anti-Ligature Basin for use with: Nose & x1 Tap Outlet for: Right Hand Wash Basin Pneumatic Controls [sold separately]	370950

Resan® Sanitaryware // Sinks & Basins



RESAN® OVAL BASIN

RESAN SANITARYWARE // SINKS & BASINS

Oval Wall Fixed Basin

- Damage resistant basins, ideal for use in all applications where there may be the potential for vandalism, heavy treatment or misuse
- Back to wall design can be mounted using our bespoke fixing bracket (code: 333413)
- Range of activation and control options available, please enquire
- Non-Flammable – BS476 Pt 6 & 7 Class '0' and Class '1'
- ISO EN 19712-3-2007 Rated 5 for durability, stain resistance and cigarette burns
- BS EN 14688:2015 Sanitary appliances. Wash basins. Functional requirements and test methods'
- UKCA/CE Marked

Product	Code
Resan Centre Hole Basin	333973
Resan 2 Hole Basin	330813



RESAN® RECTANGULAR BASIN

RESAN SANITARYWARE // SINKS & BASINS

Damage Resistant Rectangular Basin

- Damage resistant basins, ideal for use in all applications where there may be the potential for vandalism, heavy treatment or misuse
- Back to wall design allows all pipework to be safely concealed
- Range of activation and control options available, please enquire
- Easy clean gloss finish
- Bespoke colours and designs can be supplied subject to sufficient demand
- Non-Flammable – BS476 Pt 6 & 7 Class '0' and Class '1'
- ISO EN 19712-3-2007 Rated 5 for durability, stain resistance and cigarette burns
- BS EN 14688:2015 Sanitary appliances. Wash basins. Functional requirements and test methods
- UKCA/CE Marked

Product	Code
Resan Basin	330812

Resan® Sanitaryware // Sinks & Basins // Urinal Units

RESAN® BASIN - CENTRE TAP HOLE

RESAN SANITARYWARE // SINKS & BASINS

Anti-Ligature Basin With Central Single Tap Hole



- Damage resistant basins, ideal for use in all applications where there may be the potential for vandalism, heavy treatment or misuse
- Damage resistant and anti-ligature
- Back to wall design allows all pipework to be safely concealed
- Range of activation and control options available, please enquire
- Easy clean gloss finish
- Bespoke colours and designs can be supplied subject to sufficient demand
- BS EN 14688:2015 Sanitary appliances. Wash basins. Functional requirements and test methods
- UKCA/CE Marked

Product	Code
Resan Basin	333887

RESAN® BASIN - PLAIN BACK

RESAN SANITARYWARE // SINKS & BASINS

Anti-Ligature Basin With Plain Back



- Damage resistant basins, ideal for use in all applications where there may be the potential for vandalism, heavy treatment or misuse
- Damage resistant and anti-ligature
- Back to wall design allows all pipework to be safely concealed
- Range of activation and control options available, please enquire
- UKCA/CE Marked

Product	Code
Resan Basin	333885

Resan® Sanitaryware // Urinal Units



RESAN® URINAL

RESAN SANITARYWARE // URINAL UNITS

Resan Damage Resistant Urinal

- Anti-Ligature
- Damage resistant sanitaryware which is ideal for use in all applications where there may be the potential for vandalism, heavy treatment or misuse
- Back to wall design allows all pipework to be safely concealed
- Easy clean gloss finish
- Bespoke colours and designs can be supplied subject to sufficient demand
- Non-Flammable – BS476 Pt 6 & 7 Class ‘0’ and Class ‘1’
- ISO EN 19712-3-2007 Rated 5 for durability, stain resistance and cigarette burns
- BS EN 13407:2006 Wall-hung urinals. Functional requirements and test methods’.
- UKCA/CE Marked

Product	Code
Resan Urinals	325601
Accessories (Waste/Spreader & Trap Kit)	327395

Resan® Sanitaryware // Mirror Frames & Shelving



RESAN® MIRROR FRAME

RESAN SANITARYWARE // MIRROR FRAMES & SHELVING

Resan Mirror Frame System

- Anti-Ligature
- Damage resistant sanitaryware which is Ideal for use alongside Resan sanitaryware where there may be the potential for vandalism, heavy treatment or misuse
- Bespoke colours and designs can be supplied subject to sufficient demand
- 350mm x 450mm
- 500mm x 600mm
- Non-Flammable – BS476 Pt 6 & 7 Class '0' and Class '1'
- ISO EN 19712-3-2007 Rated 5 for durability, stain resistance and cigarette burns

Product	Code
Resan Mirror 350 x 450mm - Rear Fixed	326147
Resan Mirror 500 x 600mm - Rear Fixed	334297
Resan Mirror 350 x 450mm - Front Fixed	371636
Resan Mirror 500 x 600mm - Front Fixed	374414



RESAN SHELF

RESAN SANITARYWARE // MIRROR FRAMES & SHELVING

Resan Anti-Ligature Shelf

- Anti-Ligature
- Damage resistant basins, ideal for use in all applications where there may be the potential for vandalism, heavy treatment or misuse
- Bespoke colours and designs can be supplied subject to sufficient demand
- UK Ministry of Justice (NOMS) Safer Cell approval

Finish/Power	Code
Resan Shelf - Rear Fixed	326144
Resan Shelf - Front Fixed	331493

Resan® Sanitaryware // Intelligent Controls



RESAN® WASHROOM CONTROL SYSTEM

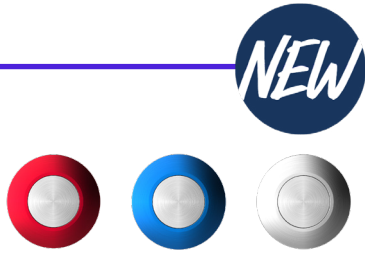
RESAN SANITARYWARE // INTELLIGENT CONTROLS

Introducing the **NEW Dudley Resan® Washroom Control System** with 4 channels, intended primarily to control a single washroom's water outlets for use in specialist custodial and healthcare applications.

- A complete washroom water management system that allows control of any combination of hot and cold taps, shower outlet and WC
- Activation of all controls using either infra-red sensors or piezo buttons
- Visual display for easy programming with tactile program buttons
- Programmable run time of hot & cold taps and showers
- Programmable lock out to prevent misuse of all outlets
- Programmable manual and automatic purge and chlorination cycle
- Remote key switch option available for out of room washroom shut off [374579]
- UKCA/CE Marked

Product	Code
Washroom Control System only	374572
Washroom Control Kit 1 - Piezo Controls c/w:	
> Washroom Control System	
> Input and Output Extension Cables	
> x1 Blue Piezo Touch Control, x2 Red Piezo Touch Control, x1 Silver Piezo Touch Control	374980
> WC Cistern Interface Control	
> x3 Solenoid Valves	
Washroom Control Kit 2 - Infra-red Sensor Controls c/w:	
> Washroom Control System	
> Input and Output Extension Cables	
> x1 Blue Infra-red Sensor, x2 Red Infra-red Sensor, x1 Silver Infra-red Sensor	374981
> WC Cistern Interface Control	
> x3 Solenoid Valves	

Resan® Sanitaryware // Intelligent Controls

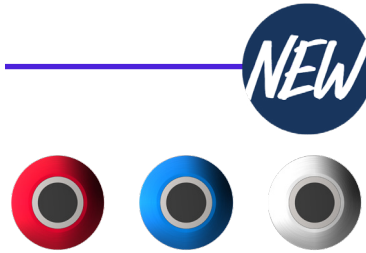


Resan® Piezo Control Kit

TOUCH CONTROLS DESIGNED FOR USE WITH TAPS, SHOWER & WC

- Used in combination with our Washroom Control System
- 2 buttons for use with taps, Hot [red] Cold [blue]
- 1 button for use with taps, shower & WC
- Colour coded surrounds: Hot [red] Cold [blue] for taps, Pre-mixed [red as standard] for single tap or shower and Silver for WC
- Anti-ligature design
- Programmable run time and lock-out function available

Item	Code
Piezo Controls - 1 Button [Blue]	384594
Piezo Controls - 1 Button [Red]	374593
Piezo Controls - 1 Button [Silver]	374595



Resan® Infra-Red Sensor Control Kit

TOUCH-FREE INFRARED CONTROLS DESIGNED FOR USE WITH TAPS, SHOWER & WC

- Used in combination with our Washroom Control System
- 2 Sensors for use with taps, Hot [red] Cold [blue]
- 1 Sensor for use with taps, shower & WC
- Colour coded surrounds: Hot [red] Cold [blue] for taps, Pre-mixed [red as standard] for single tap or shower and Silver for WC
- Anti-ligature design
- Hygienic touch-free operation
- Programmable run time, sensor range and lock-out function available

Item	Code
Infra-red Controls - 1 Sensor [Blue]	374613
Infra-red Controls - 1 Sensor [Red]	374596
Infra-red Controls - 1 Sensor [Silver]	374614



Resan® Wash Basin Control Set

PNEUMATIC ANTI-VANDAL BASIN CONTROLS

- Through-the-wall control set for vandal resistant wash basins. For use in healthcare and secure sectors
- 3 sizes available to suit a range of wall thicknesses
- Vandal-resistant robust construction
- Anti-ligature design
- Stainless steel surround
- Anodised colour coded push buttons
- Supplied with pneumatic solenoid valve (½" BSP)
- Adjustable automatic shut-off

Item	Code
Resan Pneumatic Control for walls <25mm	332825
Resan Pneumatic Control for walls <120mm	326185
Resan Pneumatic Control for walls <245mm	327822

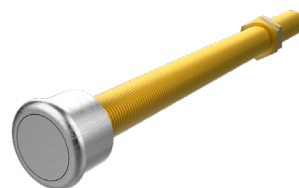


Resan® WC Cistern Interface Control

WC FLUSH INTERFACE UNIT

- Used in combination with our Washroom Control System
- Converts the 12V DC output from the Resan Control Via the designated button or sensor into a Pneumatic output controlling the Full or partial flush of our Vantage, Miniflo or Phantom V Concealed cisterns
- No additional power supply required

Item	Code
Resan WC Cistern Control	374580

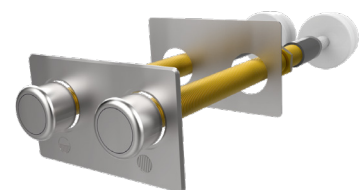


Resan® Shower Control

VANDAL RESISTANT PNEUMATIC THROUGH THE WALL CONTROL

- Through-wall control set for vandal resistant shower systems. For use in healthcare & secure sectors
- Vandal resistant robust construction
- Anti-ligature design
- Stainless steel surround
- Supplied with solenoid valve (½" BSP)

Item	Code
Resan Shower Control	326186



Resan® WC Flush Control Set

PNEUMATIC ANTI-VANDAL THROUGH THE WALL FLUSH CONTROL

- Through-the-wall control set for vandal resistant toilets. For use in areas susceptible to vandalism
- Vandal proof through-the-wall mounting
- Dualflush control
- Can be located 3m from cistern
- For use with Dudley Miniflo cistern
- Anti-ligature fittings with stainless steel laser etched finish

Item	Code
Resan WC Flush Control	326187

Resan® Sanitaryware // Intelligent Controls

NEW



Resan® Basin & Shower Solenoid Valve Kit

12VDC

- Used for controlling the water supplies to the Shower and Hot & Cold taps
- Activation via Piezo touch button or infrared sensor
- Supplied with FI to 15mm compression fittings and includes 4m Output Cable
- Fasten Electrical Terminal connections for ease of installation
- No polarity on Electrical Terminal connections
- It is recommended that the inline filter supplied is fitted to the inlet of the valve. Please note direction of flow

Item	Code
Resan Basin & Shower Solenoid Valve Kit	374578

NEW



Resan® WC Direct Flush Valve Kit

CONTROLLING WATER SUPPLY TO THE WC PAN

- Used in combination with our Washroom Control System to provide complete control over the flush operation without the need for a concealed cistern
- Activation via Piezo touch button or infrared sensor
- Dual flush or single flush programmable
- Supplied with pipe interruptor for compliance to Water Regulations, all fittings & accessories and includes 4m Output Cable
- Fasten Electrical Terminal connections for ease of installation
- No polarity on Electrical Terminal connections
- Recommended min required flow rate is 100LPM (Litres Per Minute) & a flow regulator is pre fitted to govern flow rates exceeding this

Item	Code
Resan WC Direct Flush Valve Kit	374577

NEW



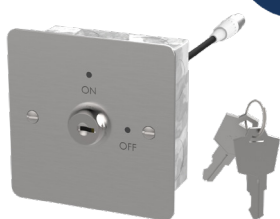
Resan® Flushpipe

PVC

- For use in combination with Dudley Direct Flush Valve for WC
- 610mm (24") x 610mm (24")x 38mm
- Can be cut down to length on the horizontal length
- The cutting of the vertical length is not recommended

Item	Code
Resan Flushpipe	363703

NEW



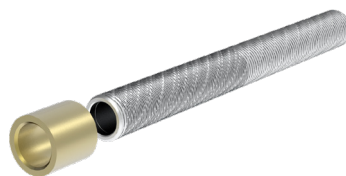
Resan® Remote Key Switch

BRUSHED STAINLESS STEEL FINISH

- Available if required for isolation of all functionality of the washroom control system - can be operated remotely & securely
- This Key operated switch is mounted into a flat Stainless steel plate which is printed 'ON and OFF' and is suitable for installation to a standard 1 Gang Metal, Dry-line or Patress box
- Comes with a 1 gang x 35mm deep metal clad patress box, with two switch plate mounting screws and two keys
- The auxiliary input cable is 4M long
- Keys are universal across all switches

Item	Code
Resan Remote Key Switch	374579

NEW



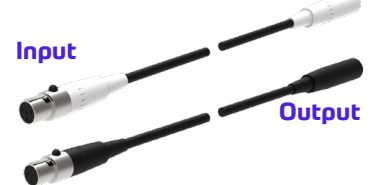
Resan® Control Extension Kit

STEEL WITH A BRASS CONNECTING COLLAR

- To suit installation up to 200mm and 300mm thick

Item	Code
Resan Control Extension Kit 100mm	374575
Resan Control Extension Kit 200mm	374576

NEW



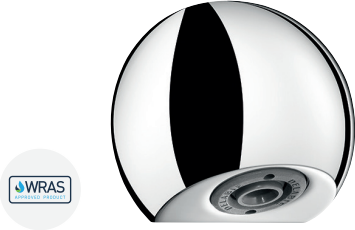
Resan® Input | Output Extension Cable

4M

- All IR sensors and Piezo touch buttons come with a 500mm long cable and a 4M input extension cable, this is so that the IR sensor or Button can be replaced without having to trace back and remove the whole cable back to the control unit
- It is recommended that any cabling either input or output does not exceed 8M

Item	Code
Resan Input Extension Cable [white]	374581
Resan Output Extension Cable [black]	374582

Resan® Sanitaryware // Options



Resan® Wall Shower Head

VANDAL RESISTANT ANTI-LIGATURE WALL MOUNTED SHOWER HEAD

- Fixed wall mounted shower head for use with walls up to 230mm thick
- Automatic flow rate regulation
- Anti-ligature design
- Scale-resistant
- Adjustable spray nozzle with locking feature
- Concealed fixings
- Systematically drains after use (no water retention or impurity deposits)
- 10 year warranty
- Anti swivel lug

Item	Code
Resan Wall Shower	326183



Resan® Ceiling Shower Head

VANDAL RESISTANT ANTI-LIGATURE CEILING MOUNTED SHOWER HEAD

- Vandal proof, anti-ligature shower for use in the healthcare & secure sector
- Vandal resistant robust construction
- Anti-ligature design
- Stainless steel finish
- Chrome plated brass body
- Other sized tails are available, please enquire

Item	Code
Resan Ceiling Shower	326184

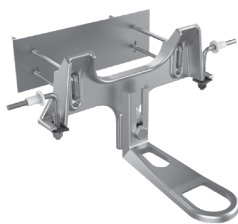


Resan® Oval Basin Waste

1 ¼" BSP WASTE FOR RESAN OVAL BASIN

- For use with the Resan® Oval Basin
- Chrome plated
- 2 x plugs included
- 2 x back nuts included; chrome plated brass and nylon
- Sealing washer included

Item	Code
Resan 1 ¼" BSP Waste Extended Tail	332344

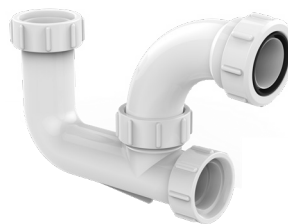


Resan® Oval Basin Bracket

HEAVY-DUTY CAST IRON BASIN BRACKET

- Heavy-duty mounting bracket for use with the Resan Oval Basin
- Highly robust ductile cast iron construction
- Damage resistant
- Suitable for use with Resan Oval Basin for direct retrofit purposes
- Supplied with through wall fixing kit (Max. Wall Thickness 155mm)
- Galvanised finish
- Height adjustable waste support

Item	Code
Resan Oval Basin Bracket	333413



Waste / Spreader & Trap Kit for Resan® Urinal

COMPREHENSIVE RANGE OF ACCESSORIES

- Urinal waste 1½" brass body and stainless steel removable dome cover
- Urinal spreader back inlet tail is made from solid brass and head has a smooth chrome finish
- L10 1½" x 75mm seal trap
- Items available to purchase separately please enquire

Item	Code
Waste/Spreader & Trap Kit for Resan Urinal	327395

Resan® Sanitaryware // Options



RESAN® ANTI-VANDAL TAP

RESAN SANITARYWARE // OPTIONS

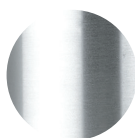
Non-Concussive Resan Anti-Vandal Tap

- For prison and custodial applications
- Single non-concussive self-closing basin push button tap
- Deck mounted
- For use with Resan Oval basin
- Automatic shut off
- Supplied with hot and cold indices with water flow aerator
- Cartridge PRO-167/C+H/VALVE-C/P
- ½" x 50mm threaded tail connections
- Deck mount drill hole diameter 22mm
- Anti-vandal anti-swivel lug feature
- Minimum operating pressure 0.2 bar LP

Product	Code
Resan Anti-Vandal Taps (pair)	332920



Polished Chrome



Stainless Steel Effect



Matt Black

ELECTROFLO® HORIZON TAP

RESAN SANITARYWARE // OPTIONS

Touch-Free Horizon Tap

- For commercial use; not anti-ligature
- Minimalistic design
- Hygienic touch-free operation
- Delivers cold or premixed warm water
- Shuts off function when hand is removed from in front of sensor
- Water delivery automatically stops after 90 seconds of continual use [can be adjusted]
- Suitable for pressures of 0.5-8.0 bar + with flow restrictor
- 50mm – 300mm sensor range
- Supports BREEAM
- Pre-fitted with 5LPM flow regulator
- 316G Stainless Steel version available

Finish/Power	Code
Polished Chrome – Mains	324329
Polished Chrome – Battery	324328
Stainless Steel Effect – Mains	327968
Matt Black – Mains	327969

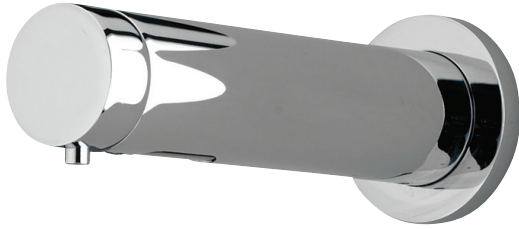
Resan® Sanitaryware // Options

ELECTROFLO® HORIZON™ SOAP DISPENSER

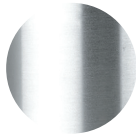
RESAN SANITARYWARE // OPTIONS

Touch-Free Horizontal™ Soap Dispenser and Hand Sanitiser

- For commercial use; not anti-ligature
- Minimalistic design
- Hygienic touch-free operation
- Robust brass body
- Attractive chrome plated, stainless steel or black finishes are available
- 1 litre capacity
- 50mm – 300mm sensor range
- Suitable for soap and hand sanitiser with viscosities of 0 to 3800cps



Polished Chrome



Stainless Steel Effect



Matt Black

Finish/Power	Code
Polished Chrome – Mains	325423
Polished Chrome – Battery	325424
Stainless Steel Effect – Mains	327976
Matt Black – Mains	327977



THERMOSTATIC MIXING VALVE

RESAN SANITARYWARE // OPTIONS

Dudley Thermostatic Mixing Valve blends hot and cold water to ensure safe and comfortable water temperature

- Perfect for use with Dudley Electroflo Taps
- Can be used with pressures of 0.2 - 10 bar
- Delivers water between 30° and 50°
- Integral check valves and filters
- Available in 15mm and 22mm
- Buildcert TMV 2 & TMV 3 approved

Size	Code
15mm	324551
22mm	324552

Case Study

Ashby Facilities - Mental Health Housing

“ Our main aim was to provide a safe environment for the residents, so the anti-ligature features were essential. We also wanted the bathrooms to suit the style of the bungalows and many of the alternatives we looked at were dated and not suitable. When we saw the Resan® products from Thomas Dudley we knew we had the right products to meet our requirements. We are very satisfied with the products recommended; so much so that we are already looking at working with them again on other projects as they always deliver top quality products that are not only good to look at and use but more importantly are fit for purpose ”

Jamie Cooper, Operations Director, Ashby Facilities



The Challenge

Ashby Facilities approached Thomas Dudley in order to help provide them with a washroom solution for a newbuild development consisting of eight bungalows. The brief we received detailed the extensive requirements which was for a number of high quality, damage resistant anti-ligature sanitaryware products that were to be installed for their resident's safety. It was imperative that the solution we suggested was aesthetically pleasing and not look overly 'clinical'.

The Solution

Our suggested solution was the installation of a number of products from our Dudley Resan® range. These products are tested and manufactured to the highest standards and offer a perfect alternative to stainless steel. Resan® products are uniquely engineered from an advanced polymer resin material which is shatterproof, exceptionally hard wearing and chemical resistant, making it the perfect solution for mental health institutes.

The Thomas Dudley team looked at the entire range and presented all suitable options. The Resan® standard height pan with blue rim was chosen along with the Resan® infra-red basin, Resan® shelf and matching Resan® mirror to complete the look.

The Result

Ashby Facilities achieved their goal and have created modern aesthetically pleasing washroom facilities in the eight bungalows and are currently looking at working with Resan products on their next project.

Healthcare environments often demand a normal in appearance sanitaryware solution that is also extremely robust to wide-ranging challenges of misuse; Resan products provided anti-ligature and damage resistant fixtures and fittings that enhanced the safety, security and aesthetics for Ashby Facilities.



**Visit our website
to read more**



Case Study

Serco - HMP Doncaster

“ We have developed a trusted partnership with the team at Thomas Dudley, one that has helped us achieve the goal of reducing lost revenue whilst providing a robust alternative to typical sanitaryware that proved costly to replace ”

Tim Wilman, FM Deputy Director
Justice and Immigration UK&E, Serco



The Challenge

HMP & YOI Doncaster cells were previously fitted with Armitage Shanks WC pans & ceramic basins plus Mazak basin brackets. Despite the brackets being tested to 150Kg & breaking at around 200Kg, they were coupled with the expectedly fragile ceramic basins & were unable to withstand the heavy treatment to which they were being exposed.

The prison walls are robustly constructed from concrete so any replacement products needed to be easily retrofittable. In addition, when ceramic sanitaryware shatters, the resulting fragments are extremely sharp & present an obvious & significant security risk. Under the terms of the management contract, Serco loses revenue of around £300 for every night that a cell is left out of service whilst broken sanitaryware is being replaced.

The Solution

Our team began by talking to Serco about the breakages & the resulting operational problems. Site visits were also completed as part of the process in order to better understand the project requirements.

In order to provide a solution, Thomas Dudley's design team exploited state-of-the-art CAD/CAM & rapid prototyping capabilities to configure an alternative. Moulds were then produced along with a sample basin for approval. Thomas Dudley has an award-winning engineering foundry. Here, the team set about developing a new bracket to support the newly designed basin. Engineered

using an exceptionally strong grade of ductile iron, this provided far greater durability than the old Mazak bracket.

Whilst a WC pan from the existing Resan range provided a compatible replacement for the ceramic pans, a bespoke stainless steel backplate was needed in order to comply with the installation requirements approved by Serco. Bespoke anti-swivel taps completed the package.

The Result

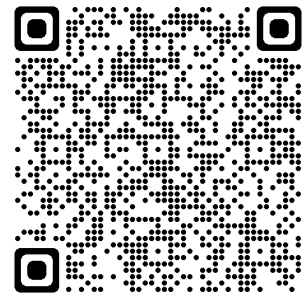
The partnership with **Thomas Dudley** & the bespoke products from both the Resan & Thomas Dudley range that have been developed have enabled Serco to realise significant benefits:

- ~ 90% reduction in the number of basins and brackets broken
- ~ 95% reduction in the number of WC pans broken
- ~ 40% reduction in typical replacement sanitaryware installation time
- ~ 90% reduction in revenue lost due to cell downtime
- ~ Convenience of being able to order WC pans, basins, brackets and other products from a single source of supply
- ~ Security of and responsiveness of supply via **Thomas Dudley's** customer-driven stock agreements which provide the reassurance of knowing that a guaranteed, predetermined stock level will be maintained for every specified product

serco



Visit our website
to read more



Case Study

Wells Commercial Refurbishment Solutions Ltd - Public Toilets

“The new toilet block is an important facility for the popular High Street and anti-vandal sanitaryware was essential. The Resan® range from Dudley was perfect for what we needed and the experts at Thomas Dudley were fantastic throughout the project from our initial conversation to completion”

Gary Wells, Wells Commercial Refurbishment Solutions Ltd



The Challenge

Thomas Dudley was recently approached by Garry Wells at Wells Commercial Refurbishment Solutions Ltd who were looking for a solution for a project they were working on for the refurbishment of Norton public toilets on behalf of Stockton on Tees Borough Council. The brief that Garry and his team had from Stockton on Tees Borough Council included a requirement for Anti-Vandal WC Pans and Basins.

The Solution

After researching our Resan® products online the team at Wells Commercial Refurbishment contacted one of our Business Development Managers to find out more about what kind of solution we could provide. After some initial discussions we were invited to meet with Garry and his team to go through the requirements of the project in more depth.

Over a period of time, we worked together to create a comprehensive list of exactly what would be needed to complete the job to the high standards demanded by Stockton on Tees Borough Council. We provided samples of our recommended

products to Garry and his team and satisfied that Resan® was what they were looking for, Wells CRS placed the order for our products via Crosslings Merchants in Stockton on Tees.

The Result

In order to ensure that the installation of the products went smoothly for Wells, our Resan® Specification Manager attended the site several times to offer advice and suggestions on all aspects of installation and setup. This helped to ensure that Garry and his team at Wells CRS met the high expectations of their client who were delighted with the finished project. Stockton on Tees Borough Council are confident that the finished project will serve the community of Norton for many years to come.

This project highlights the benefits of using our Resan® products on projects of this type due to their damage resistant qualities. It also provides further evidence that the excellent onsite expertise and service we can offer to contractors will always guarantee the best quality finishes.



**Visit our website
to read more**



Case Study

Henman & Cooper - Cocktail Bar

“ I was really happy with the whole experience from my initial conversation with Anthony to purchase and installation. The WC's back-to-wall feature hides the cistern and saves space and most importantly they are vandal-proof which is just what we need. I was so impressed, Thomas Dudley have also helped to install WC's at one of my other bars. I wouldn't hesitate to recommend them. Superb products and service ”

Wayne Tracey, Owner of Henman & Cooper Bar



The Challenge

Housed within a Grade II building in Birmingham City Centre, Henman & Cooper Bar is a quirky cocktail bar with rooftop terrace created by Wayne Tracey, owner of a collection of bars including popular nightclub Snobs

The innovative bar was transformed in 2019 and owner Wayne required the installation of high-quality bathroom products to compliment the modern décor but it needed to be robust to withstand the hardest of treatment.

The Solution

Thomas Dudley Business Development Manager, Anthony McDonagh met with Wayne to discuss his exact requirements. Anthony visited the venue to inspect the area to determine which of the Thomas Dudley

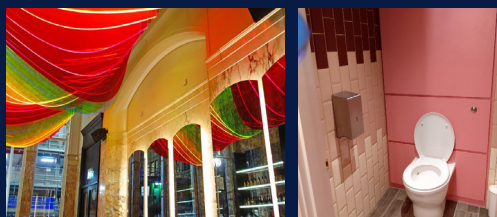
products would be most suitable. Internal discussions then took place with the Thomas Dudley product and design teams. We engaged our client and made recommendations based on the best solution to meet his needs. The Resan® range is manufactured to the highest standard and is engineered from an advanced polymer resin material which is shatterproof, hard-wearing and chemical resistant. This makes the products perfect for Property Managers looking for vandal resistant sanitaryware.

The Result

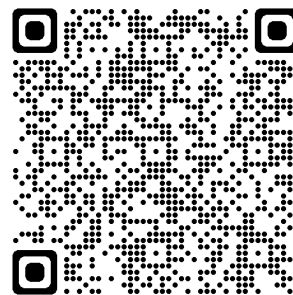
Wayne Tracey, the owner of Henman & Cooper was left extremely happy with the everything from start to finish; the project support he received helped create the exact specification required for the job and the vandal-resistant features provided were exactly what Wayne was looking for. The support and products received have now been extended to other bars under Waynes ownership.

HENMAN AND COOPER

BAR & ROOFTOP



Visit our website
to read more



THOMAS
DUDLEY



The source of **clever plumbing products and people**



SPECIFICATION & CONTRACT SUPPORT

e specification@tyde.co.uk *p* +44 (0)121 530 7000

NATIONAL SPECIFICATION & OEM MANAGER

p +44(0) 7712 842 787

RESAN & SPECIALIST PROJECTS MANAGER

p +44(0) 07747 446 146

SPECIFICATION MANAGER NORTH

p +44(0) 07867 170 142

SPECIFICATION MANAGER SOUTH

p +44(0) 07717 200 699

CUSTOMER SERVICE

e sales@tyde.co.uk *p* +44(0) 121 557 5411

CREDIT CONTROL

e accounts@thomasdudley.co.uk

MARKETING

e info@tyde.co.uk

UK ENQUIRIES

t +44 (0)121 530 7000

or e sales@tyde.co.uk

w www.thomasdudley.co.uk/tyde



TD THOMAS | DUDLEY
British design, British build, Family business

Thomas Dudley Plumbing

295 Birmingham New Road
Dudley, West Midlands
United Kingdom
DY1 4SJ

A Thomas Dudley Business